


IFMA Houston's
January 2021
Virtual Event



"10 Inspirational & Practical Life Strategies from a Big Dreamer" January 13, 2021

IFMA HOUSTON



40 YEARS

- RECORDING
- PANELISTS
- QUESTIONS
- POWER
- ILLUMINATION
- CORNERSTONE
- BOARD

Introduction

The following eBook was compiled based on information provided from the January virtual presentation, "10 Inspirational & Practical Life Strategies from a Big Dreamer" featuring Dawn Landry.

We hope you find this resource useful in the future.

How to Use this eBook

Each of the tabs are links taking you to that particular section of the eBook. Additionally, some of the sections have multiple pages.

The sections with multiple pages will have the following image in the bottom right hand corner to allow you to "turn the page."



Table of Contents

RECORDING.....	1
SPEAKER INFO.....	2 - 3
KEY TAKEAWAYS.....	4 - 5
SPONSOR SPOTLIGHT.....	6 - 7
POWER SPONSORS.....	8 - 11
ILLUMINATION SPONSORS.....	12 - 17
CORNERSTONE SPONSORS.....	18 - 23
IFMA HOUSTON BOARD INFORMATION.....	24 - 25
UPCOMING IFMA HOUSTON EVENTS	26 - 27
THANK YOU MESSAGE.....	28

****NOTE TO USER:** ALL TABS ARE LINKED TO THEIR RESPECTIVE SECTIONS. SECTIONS WITH MULTIPLE PAGES HAVE ARROWS FOR YOU TO CLICK ON TO PROGRESS TO THE NEXT PAGE OR PREVIOUS PAGE.**

RECORDING



IFMA HOUSTON PRESENTS



Dawn F. Landry
Author & Founder
Authentizity, LLC

**"10 INSPIRATIONAL &
PRACTICAL LIFE
STRATEGIES FROM A BIG
DREAMER"**

Original Meeting Date:
January 13, 2021

[Click Here to Watch the Replay](#)

Above you will find the recording from the Speaker Presentation on Thursday, January 13, 2021.

RECORDING

PANELISTS

QUESTIONS

POWER

ILLUMINATION

CORNERSTONE

BOARD

SPEAKER - Page 1



DAWN F. LANDRY
AUTHENTIZITY

Dawn F. Landry is a bestselling author and an award-winning and respected business professional. She has spent over half of her 28-year career in Houston's corporate real estate industry, excelling in business development and marketing leadership positions within the region's largest economic development organization, as well as international commercial construction companies. In February 2017, Dawn founded Authentizity, LLC, as an independent B2B growth strategist and a Gallup-Certified CliftonStrengths® Coach to provide consulting, training, and coaching services that optimize technical teams' engagement and productivity.

SPEAKER - Page 2

She released her first book, **ARMORED**, in the Fall of 2020 to great success. All three versions have achieved Best Seller rankings with the paperback hitting the #42 ranking. **ARMORED** has received press via traditional print, as well as podcast and social media channels internationally.

Please visit her websites for more information:
www.authentizity.com and www.dawnflandry.com.

KEY TAKEAWAYS – Page 1

ARMORED, A Memoir with Inspirational and Practical Life Strategies

BOOK TRAILER for [ARMORED: A Memoir with Inspirational and Practical Life Strategies](#) – **Newly Released on January 11, 2021:**

PURCHASE OPTIONS:

On Amazon at

<http://www.amazon.com/author/dawnflandry>.

Or, directly from Dawn F. Landry at

www.dawnflandry.com.

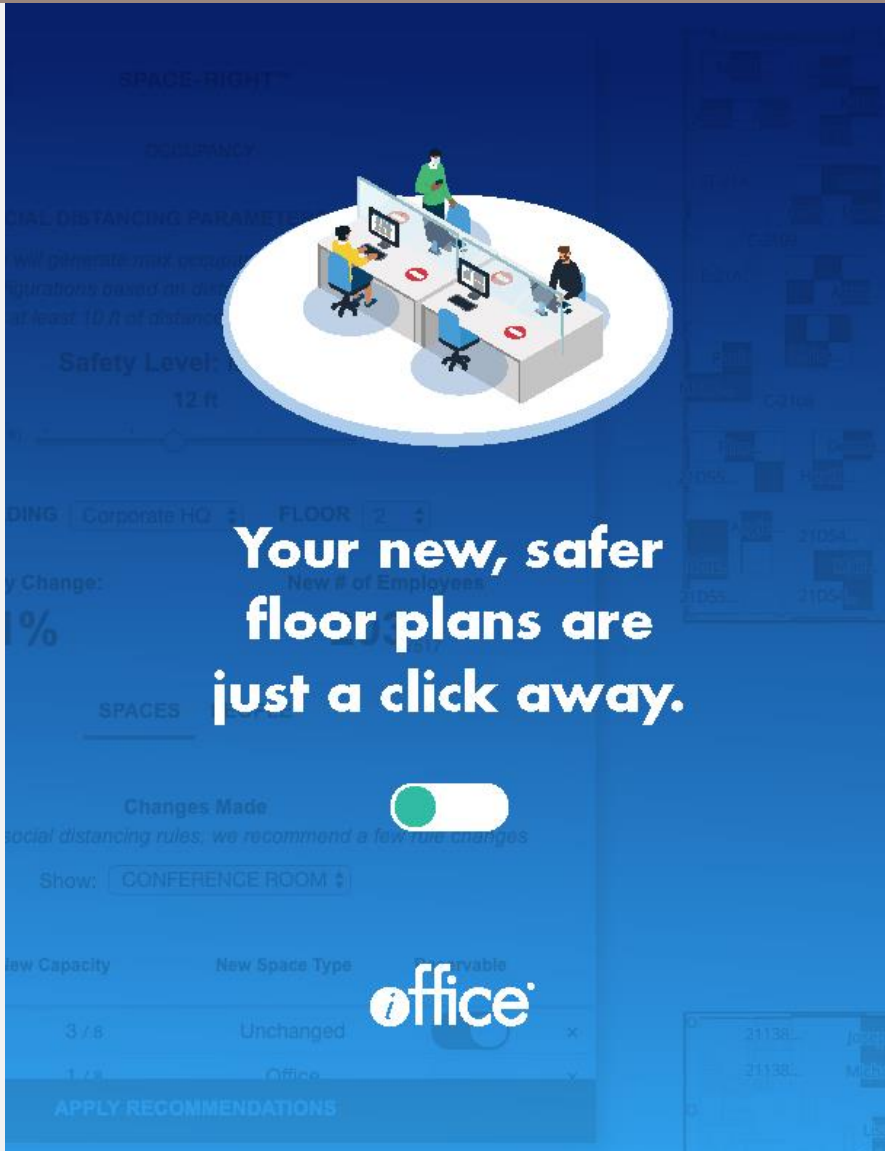
NOTE: If purchasing direct, use promo code: IFMA2021 (for autographed copy and free shipping.)

KEY TAKEAWAYS – Page 2

TOP 10 STRATEGY SUMMARY:

1. Advance Self-Awareness.
2. Pick a Great Partner; Know Your Partner.
3. Ready Your Life.
4. Deploy Coping Mechanisms.
5. Don't Worry Until It's Time to Worry.
6. No People Pleasing Allowed.
7. Laugh Often.
8. Celebrate All Achievements.
9. Live with Grace; Reclaim Your Mojo.
10. Define the Next Chapter.

POWER - Page 1



SPACE-RIGHT™

PHYSICAL DISTANCING PARAMETERS

Safety Level: 12 ft

Your new, safer floor plans are just a click away.

Changes Made

social distancing rules: we recommend a few rule changes

Show: CONFERENCE ROOM

office

APPLY RECOMMENDATIONS

POWER - Page 2

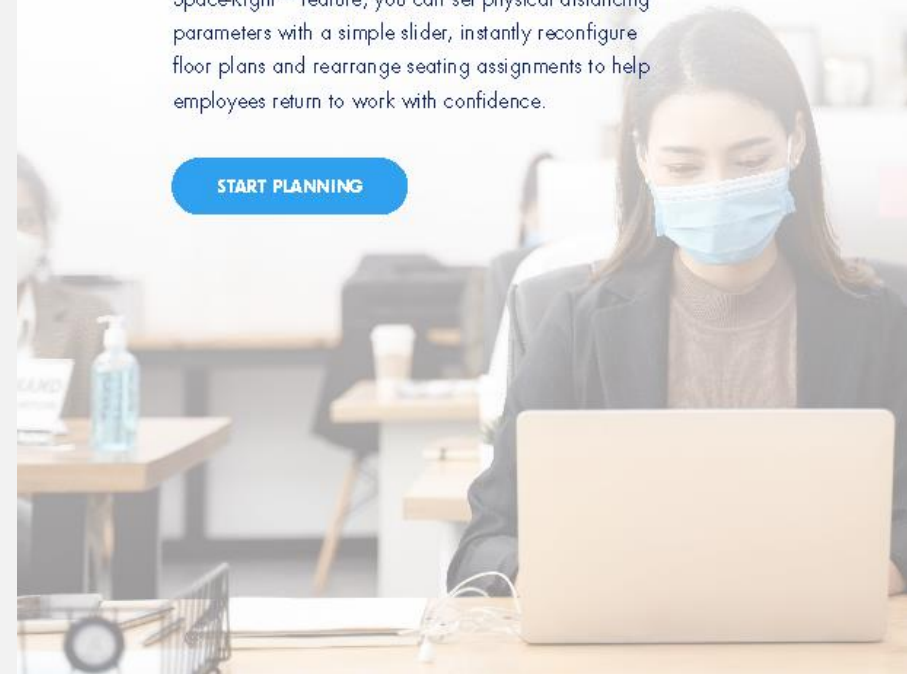
Introducing

SPACE-→RIGHT™

A dynamic space planning solution that helps you adjust to new expectations and ways of working.

With iOFFICE's space planning software and SpaceRight™ feature, you can set physical distancing parameters with a simple slider, instantly reconfigure floor plans and rearrange seating assignments to help employees return to work with confidence.

START PLANNING



ILLUMINATION – Page 1

It's time
to get
proactive.



Long-Lasting Surface Coating That Protects Against COVID-19 for Up to 90 Days!

While other disinfectant sprays might provide a momentary clean, SurfaceWise2™ is proven to kill coronaviruses on surfaces even after new germs are deposited.



For more information, visit: www.GoAPEX.com/surfacewise2/

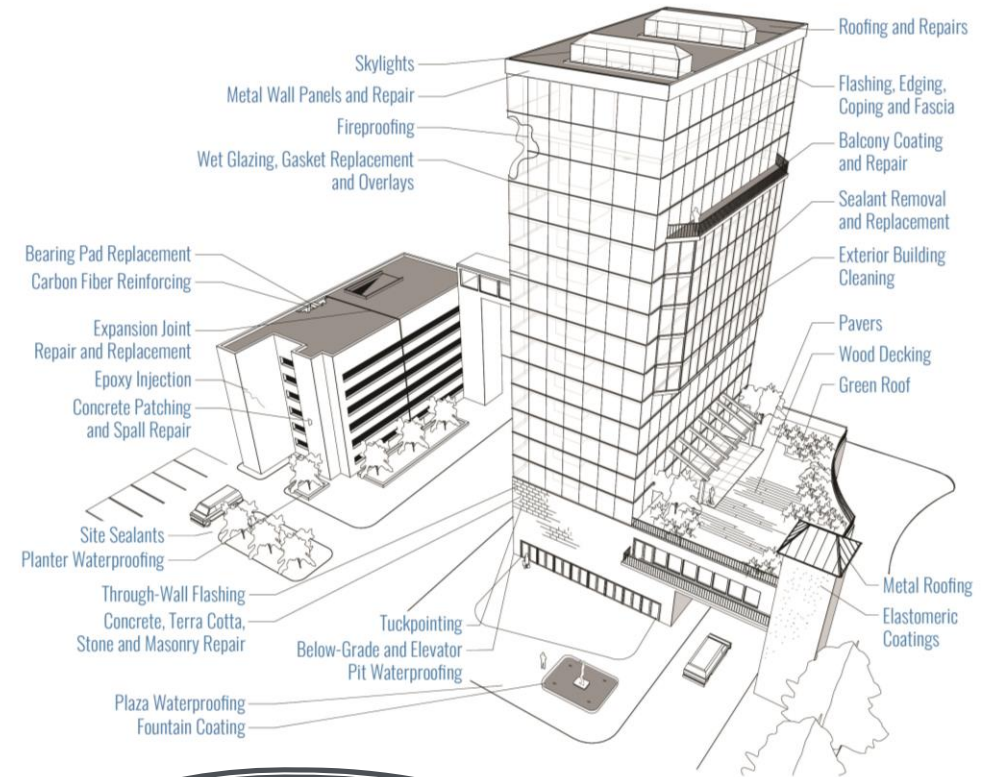
- ✓ Continuous Coverage
- ✓ Durable & Long-Lasting
- ✓ Practical & Efficient
- ✓ EPA-Approved



1-844-GO-APEX-1

ILLUMINATION – Page 2

TOTAL BUILDING ENVELOPE CONTRACTOR



CHAMBERLIN
Roofing & Waterproofing

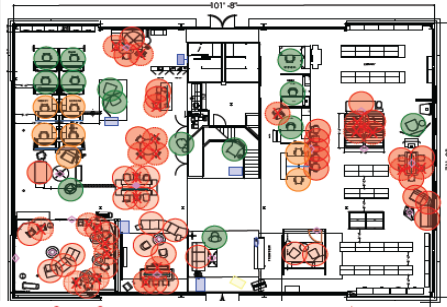


ILLUMINATION - Page 3

RECONSTRUCTION WITH PURPOSE

our social distancing assessment //

Know your options when it comes to repurposing and restructuring the way your workspace flows and functions. With our Social Distancing Assessment, we take the hard work out of rethinking your workspace, so that it serves your team and clients with optimal efficiency in a safe environment.



EXPLORE

Meet with an experienced Salesperson and Design Consultant to discuss various project aspects and estimate workload. We can talk through:

- Project goals and challenges
- Your vision
- Preliminary budget

*FF&E assessment included with this service.



ANALYSIS

We will set our focus on the specific demands of your workspace. We can help you best determine:

- Your needs to disperse for the health and safety of others
- Ideal seating conditions for workstations and collaboration areas
- Safety signage needs throughout your facility



TAILOR

A review of existing drawings will be necessary to assess your facility's current state and assist with strategy. To better establish a plan for your facility, we will use tools such as:

- Existing CET drawings
- CAD 2D or 3D designs
- Applied symbols to accurately identify potential needs



EXPERIENCE

You will receive items you can use to make your workplace a safe space. You will receive:

- An outlined document of potential needs
- Legend identifying symbols and products needed
- A map identifying capacity and general safety reminders
- A template of signage with editing capabilities
- Training on how to use and read the plan set in place for your facility

SCHEDULE AN ASSESSMENT

for your business and ensure the safety of your employees and clients now and in the future.

AUSTIN 512.442.0703 / HOUSTON 713.862.4600 / mccoyrockford.com

McCOROCKFORD
COMMERCIAL INTERIORS

ILLUMINATION - Page 4



Mohawk Group

Mohawk Group's next step is Smart City—a Living Product carpet plank system inspired by some of the world's most connected places. Base patterns with the texture and tempo of a metropolitan mosaic and coordinating motifs with networks of linear color deliver a carbon neutral combination—offering the look of tomorrow in the moment of today.

Experience how Mohawk Group is nurturing the built environment with new directions in sustainable and intelligent design at MOHAWKGROUP.COM/SMARTCITY

ILLUMINATION - Page 5


iD Latitude™
LUXURY VINYL FLOORING

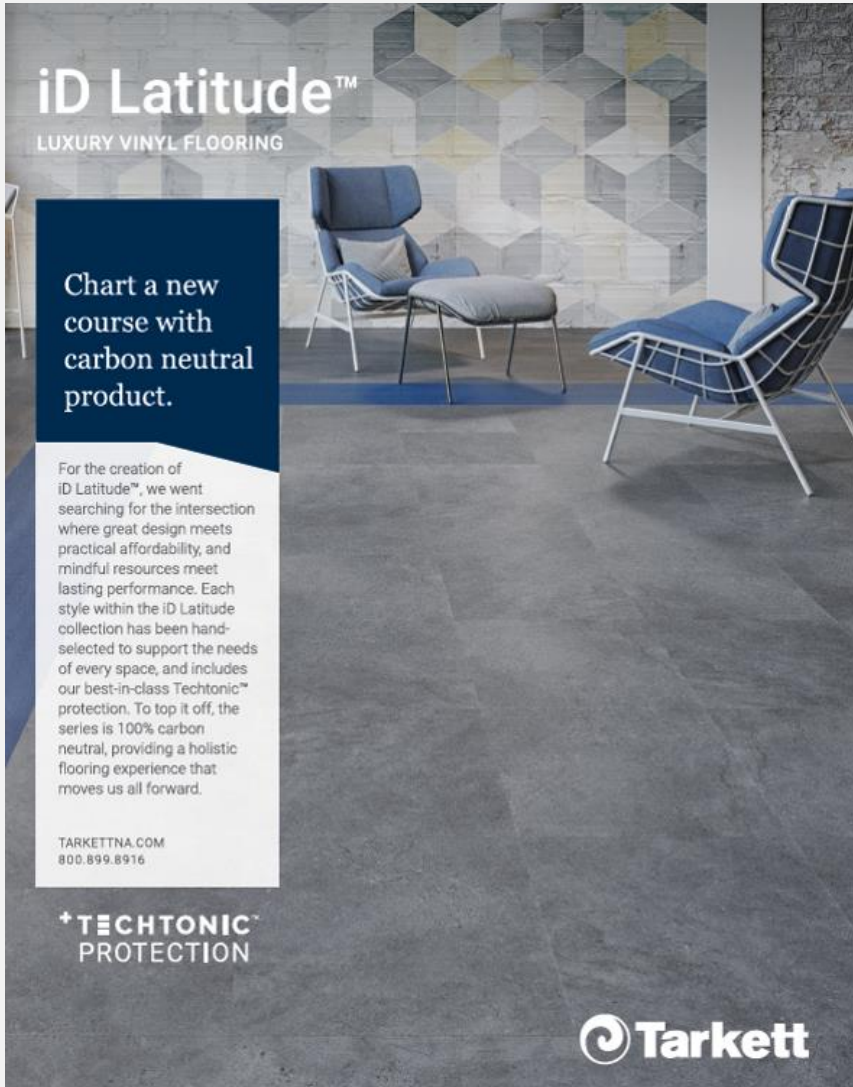
Chart a new course with carbon neutral product.

For the creation of iD Latitude™, we went searching for the intersection where great design meets practical affordability, and mindful resources meet lasting performance. Each style within the iD Latitude collection has been hand-selected to support the needs of every space, and includes our best-in-class Techtonic™ protection. To top it off, the series is 100% carbon neutral, providing a holistic flooring experience that moves us all forward.

TARKETTNA.COM
800.899.8916

**+TECHTONIC™
PROTECTION**

 Tarkett



ILLUMINATION - Page 6

Thank you to our 2020-2021 Illumination Sponsors!



McCOY ROCKFORD
COMMERCIAL INTERIORS

 **Mohawk Group**

 **Tarkett**

CORNERSTONE – Page 1



Specification &
Samples



Project Management
& Pricing



Installation &
Maintenance

Where Flooring Is Our Passion
713.682.0202

CAREFORCE
EMERGENCY ASSET SERVICES

CORPORATE CARE
Proactively Solving. Ever Evolving™

COVID-19 Emergency Response

Don't Let Coronavirus
Disrupt Business Continuity

- CARE Guard – 90-day Surface Anti-Microbial Protective Barrier Coatings
- CleanMeasures™ - 3rd Party Enhanced Cleaning & Disinfecting Program Audits
- CARE Force – Emergency COVID-19 Remediation Services (Level I – Level IV)

1 (800) 728-8508 | WWW.CORPORATECARE.COM

CORNERSTONE – Page 2

Environment
ARCHITECTURAL MILLWORK



Environment Ltd. Is a fabricator and installer of premium architectural millwork. We buy common and exotic veneers from quality suppliers that carry long runs to make sure we have enough matching product for any size project. Houston Millwork is another side of the company that specializes in commercial plastic laminate casework for medical, office and industrial markets.

CREATING A
MORE RESILIENT
WORLD
THROUGH THE
POWER OF
DESIGN.

Design from the inside out

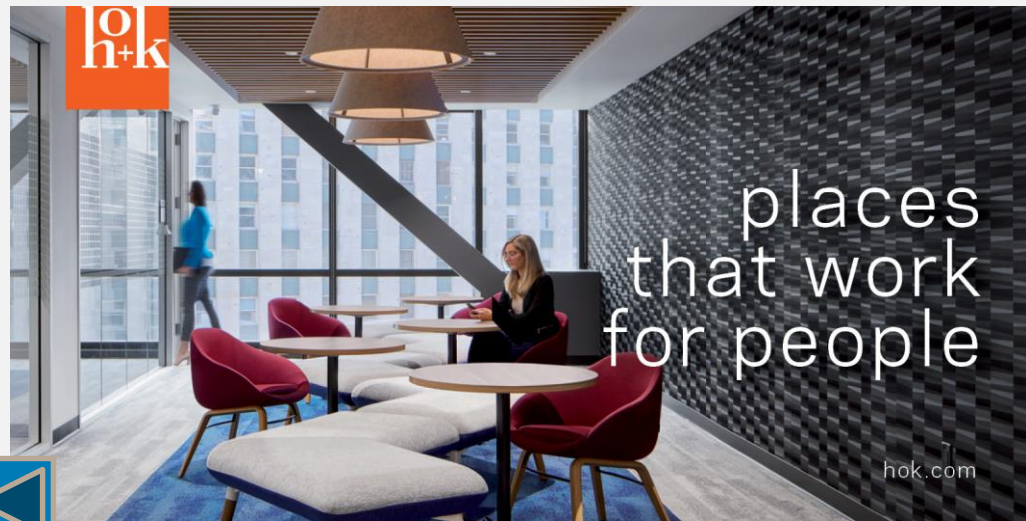
Gensler

www.gensler.com



IFMA
Houston
Chapter
International Facility Management Association

CORNERSTONE – Page 3



CORNERSTONE – Page 4



CORNERSTONE – Page 5



At **ServiceMaster Recovery Management**, we've been in the business of getting you back in business for more than 60 years. From water and fire recovery to sanitization and disinfection, we respond quickly to keep your business running.



CONTACT US TODAY

800-303-5844

www.servicemaster-restoration-cleaning.com

CORNERSTONE – Page 6

Thank you to our 2020-2021 Cornerstone Sponsors!

ACS FLOORING GROUP / ACS MAINTENANCE SOLUTIONS

ARNOLD & ITKIN LLP

C&W SERVICES

CORPORATE CARE

ENVIRONMENT LTD

GENSLER

HARVARD MAINTENANCE

HERMAN MILLER

HOK

INSIDE EVOLUTIONS

MAINTENANCE OF HOUSTON

MANNINGTON COMMERCIAL

SERVICEMASTER RECOVERY MANAGEMENT

BOARD OF DIRECTORS - Page 1

President

Jane Stallings, FMP

jane.stallings@conocophillips.com

Vice President

Scott Lang, CFM

scott.lang@lr.org

Treasurer

Lily Pritchett

lpritchett@mccoynrockford.com

Secretary

Betty Morgan

bmorgan@hilcorp.com

Immediate Past President

Bertha Neal-Eley, FMP

bnealeley@outlook.com

Liaison

Bart Surratt, CFM

kbsurratt@comcast.net

BOARD OF DIRECTORS - Page 2

Associates Chair

Paul Baker

paul.baker@tarkett.com

Golf Chair

Elena Champagne

elc98@ymail.com

IFMA Cares Chair

Roxanne Ellis

roxanne@envltd.com

Membership Chair

Scott Lang, CFM

Scott.lang@lr.org

Young Professionals Chair

Dana Wimer

dwimer@newpark.com

Programs Chair

Micki Washington

micki.washington@hok.com

Social Media Chair

Roxanne Ellis

roxanne@envltd.com

Special Events Chair

Kathy Edwards

kedwards@goapex.com

Sponsorship Chair

Linda Warner

linda_warner@kindermorgan.com

Sustainability Chair

Jacqueline Salterio

jacqueline_salterio@gensler.com



40 YEARS

UPCOMING EVENTS



Joint Virtual Event
IFMA Houston/CoreNet

"SPACE CENTER HOUSTON'S PLANS
 FOR THE FUTURE"



February 9, 2021 | 11:30 AM to 1:00 PM
REGISTRATION IS OPEN!

[Click Here to Register Now!](#)

HUG-A-BEAR



**IFMA Houston's
 Annual Hug-A-Bear**

Start Collecting New 12"
 to 14" bears & Stuffed
 Animals!



All Bears will either
 need to be delivered to
 the IFMA Houston
 office or be picked up
 by the end of March!

**Contact Kathy Edwards for more
 information or to schedule a pick-up.**
kedwards@goapex.com



THANK YOU!

Thank
you

We hope to "see" you soon, but until then,
we will continue meeting virtually!

*See You at the January Event:
be looking for more details soon!
Use the link below to REGISTER NOW!*

[Click Here to Register Now!](#)